

NOTES:

- Before installation, refer to Simplex Field Wiring Diagram for the 4100 Graphic LED/SWITCH Controller Module.
- There can be a total of (1) 4100-7403 and (2) 4100-7404 Driver Boards connected to each 4100-7402 Driver.
- Maintain a min. of 1/2" Clearance around the driver when installed on a Kirkland Backplane. (UL-864)
- All circuits entering the annunciator enclosure must be power limited as described in UL Standard 864, Section 24A.
- The L.E.D. Outputs are 24VDC Negative Feed (Current limited in the Annunciator. (1.5K))
- The number next to each switch & L.E.D., (I.E. SW1-2, 1-16), is used to locate the individual Switch or L.E.D. on the graphic panel. Please refer to the accompanying numbered artwork for the actual location of these devices.
- See the accompanying Excel Spreadsheet for detailed wiring information.

DRIVER DIAGRAM

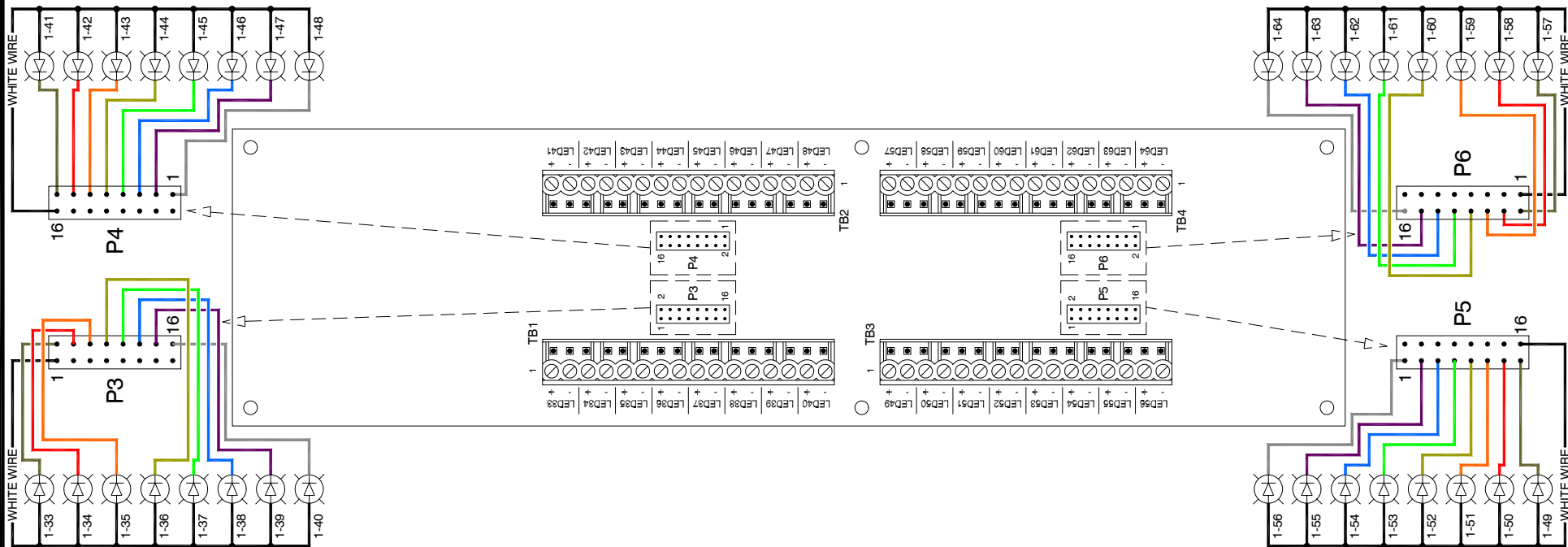
Simplex 4100-7402 Controller Module
24VDC NEGATIVE FEED



H. R. KIRKLAND CO., INC.
4935 Allison Street, Unit 13
Arvada, Colorado 80002
Phone: (800) 247-2303 Fax: (303) 420-1856

DATE: 15 MAR 2003 BY GG
REVISION: ORIGINAL

CAP-8645A
SHEET 1 OF 3

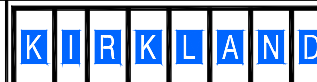


NOTES:

- Before installation, refer to Simplex Field Wiring Diagram for the 4100 Graphic Annunciator 32 LED MODULE
- There can be a total of (1) 4100-7403 and (2) 4100-7404 Driver Boards connected to each 4100-7402 Driver.
- Maintain a min. of 1/2" Clearance around the driver when installed on a Kirkland Backplane. (UL-864)
- All circuits entering the annunciator enclosure must be power limited as described in UL Standard 864, Section 24A.
- The L.E.D. Outputs are 24VDC Negative Feed (Current limited in the Annunciator. (1.5K))
- The number next to each switch & L.E.D., (I.E. SW1-2, 1-16), is used to locate the individual Switch or L.E.D. on the graphic panel. Please refer to the accompanying numbered artwork for the actual location of these devices.
- See the accompanying Excel Spreadsheet for detailed wiring information.

DRIVER DIAGRAM

Simplex 4100-7403 LED Module
24VDC NEGATIVE FEED

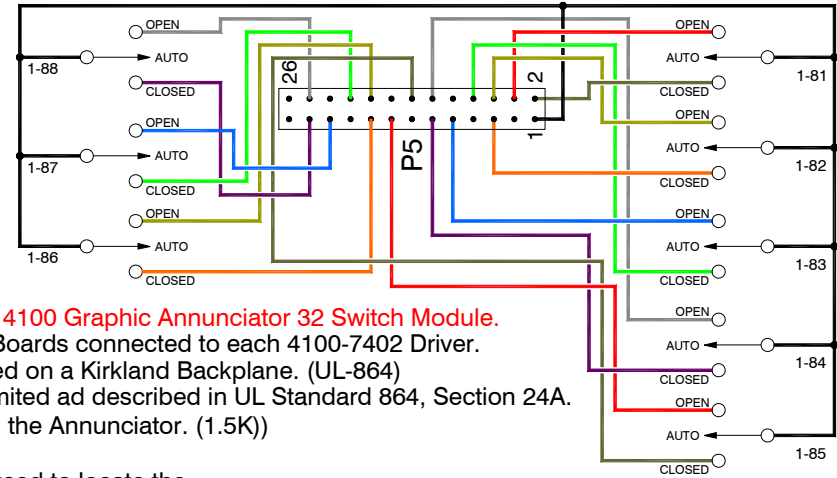
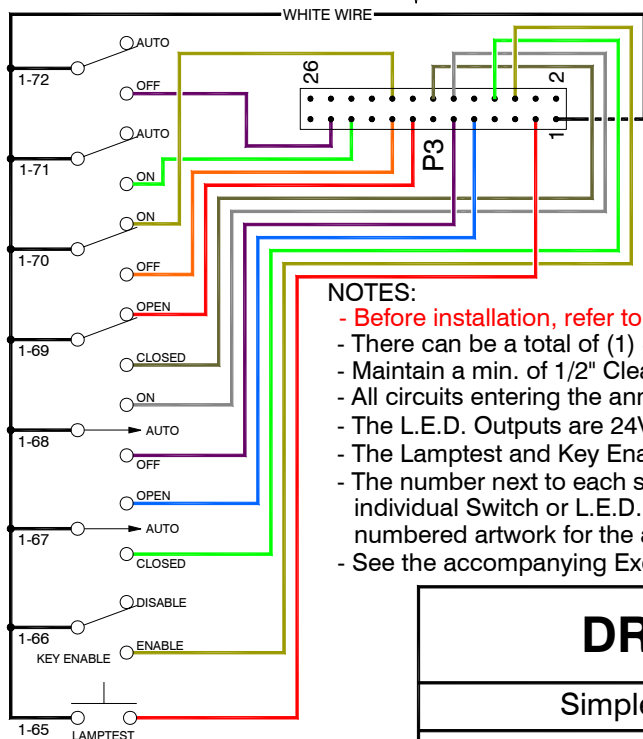
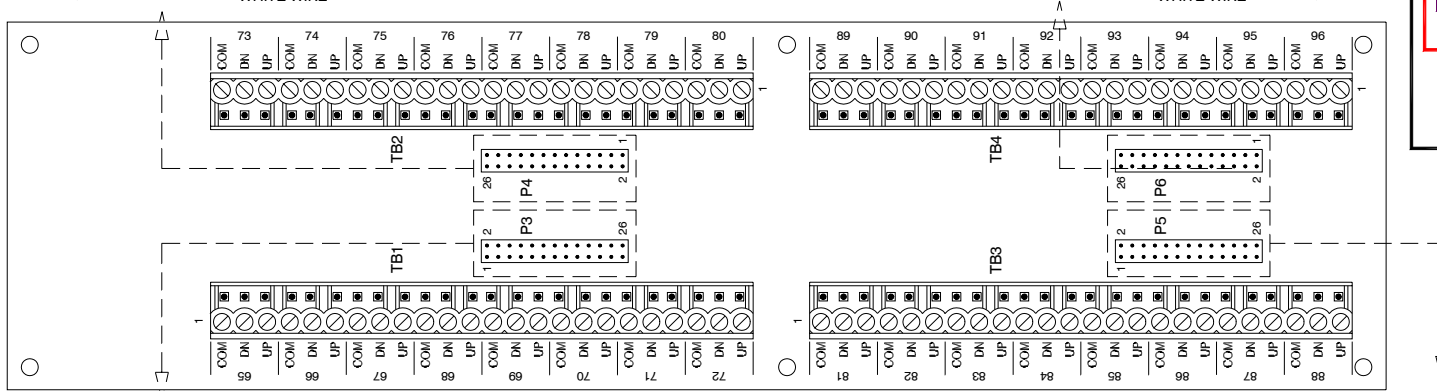
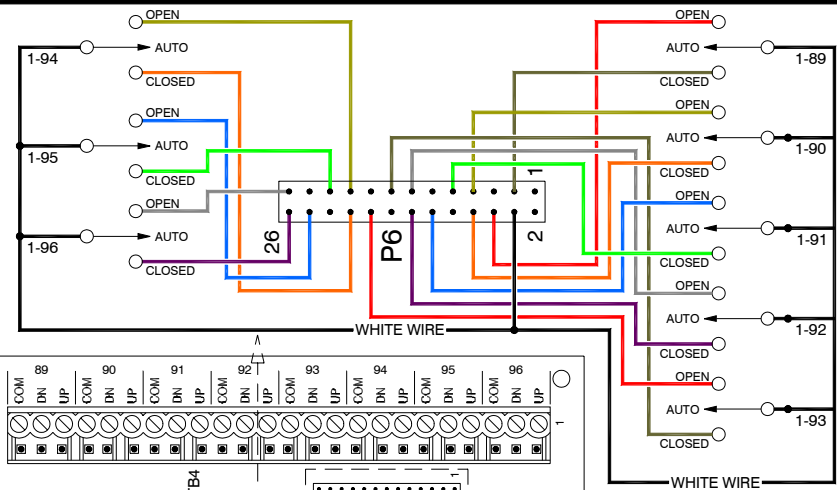
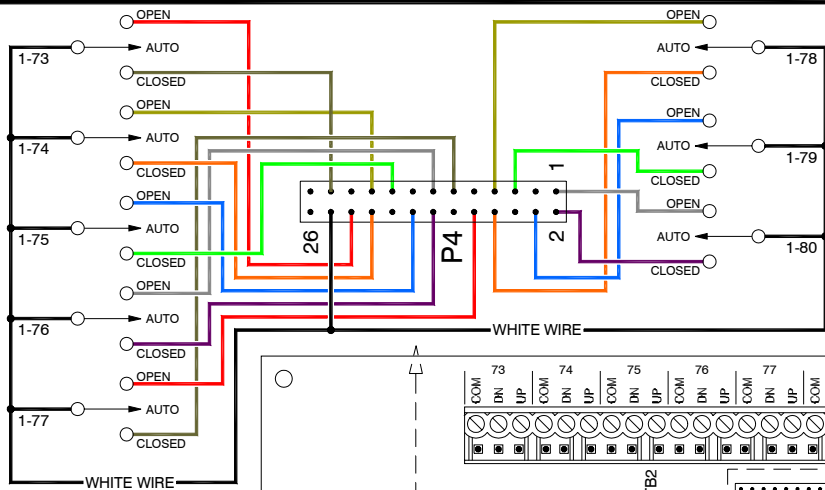


H. R. KIRKLAND CO., INC.
4935 Allison Street, Unit 13
Arvada, Colorado 80002
Phone: (800) 247-2303 Fax: (303) 420-1856

DATE: 15 MAR 2003 BY GG

REVISION: ORIGINAL

CAP-8645B
SHEET 2 OF 3



NOTES:

- Before installation, refer to Simplex Field Wiring Diagram for the 4100 Graphic Annunciator 32 Switch Module.
- There can be a total of (1) 4100-7403 and (2) 4100-7404 Driver Boards connected to each 4100-7402 Driver.
- Maintain a min. of 1/2" Clearance around the driver when installed on a Kirkland Backplane. (UL-864)
- All circuits entering the annunciator enclosure must be power limited as described in UL Standard 864, Section 24A.
- The L.E.D. Outputs are 24VDC Negative Feed (Current limited in the Annunciator. (1.5K))
- The Lamptest and Key Enable Switches are optional.
- The number next to each switch & L.E.D., (I.E. SW1-2, 1-16), is used to locate the individual Switch or L.E.D. on the graphic panel. Please refer to the accompanying numbered artwork for the actual location of these devices.
- See the accompanying Excel Spreadsheet for detailed wiring information.

DRIVER DIAGRAM

Simplex 4100-7404 Switch Module
24VDC NEGATIVE FEED



H. R. KIRKLAND CO., INC.
4935 Allison Street, Unit 13
Avada, Colorado 80002
Phone: (800) 247-2303 Fax: (303) 420-1856

DATE: 15 MAR 2003 BY GG
REVISION: ORIGINAL

CAP-8645C
SHEET 3 OF 3