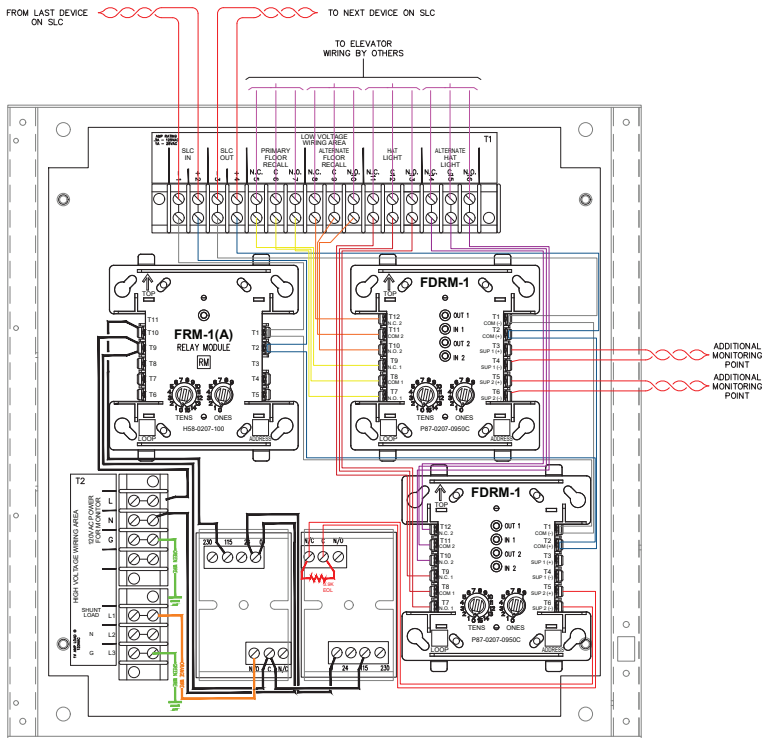
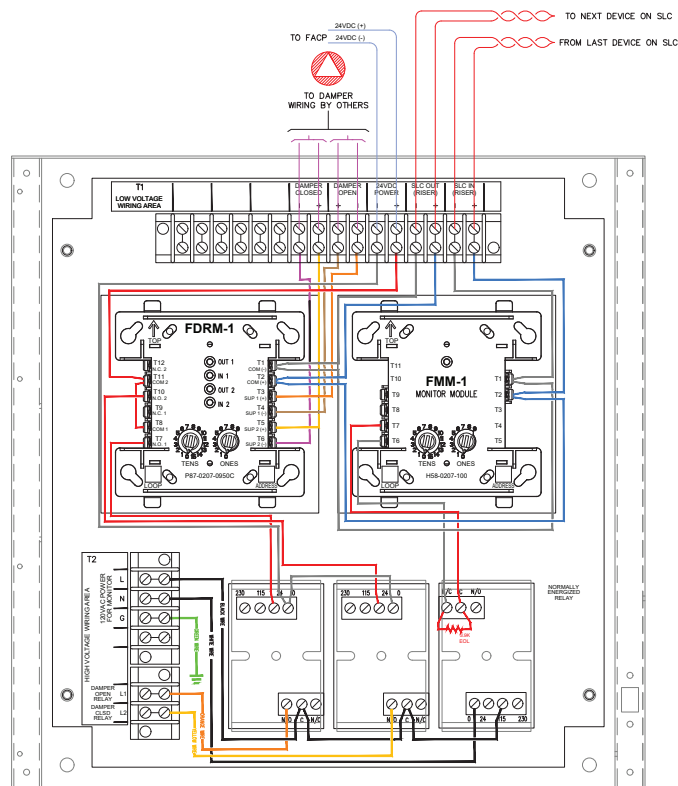




# TERMINAL CABINET BAKBOX SERIES



ELEVATOR RECALL, SHUNT TRIP W/ POWER MONITOR



DAMPERS CONTROL

## MATERIAL

**Enclosure:** #18 Gauge Steel with Red Powder Coat Textured Finish (Standard). Concealed Piano Hinges or Removable Flat Cover Plate.

**Key Lock:** Standard 3/4" Cat 30 Key Lock or can match Fire Alarm Distributor Model and Keying as well.

## BOX SIZE

**Surface Mount:** 14.25" w x 14.25" h x 3.25" d

## STANDARD FEATURES

- Permanently Silk Screened Labeling (1" h White Ink)
- Removable Flat Cover Plate
- Your Company Logo and Information applied to the Cover Plate



Intertek

**UL STD 864**

## KIRKLAND MANUFACTURES SOLUTIONS FOR YOUR PROJECTS

Elevator Shunt Trip with Power Monitoring that can be used in a variety of applications especially a Machine-Room-Less Elevator.

